



# Xbox 360 Teardown

This is a simple teardown of an Xbox 360

Written By: Michael



---

# INTRODUCTION

I am going to show you how to tear apart an xbox with simple tools.

---



## TOOLS:

- [Flathead Screwdriver](#) (1)
  - [Spudger](#) (1)
  - [Precision Utility Knife](#) (1)
-

## Step 1 — Hard drive



- Here you would usually have a hard drive, my xbox does not. To remove it you push down the button and lift it out

## Step 2 — Removing the front cover



- You can put a flat head screw driver in between the plastic as shown and gently pry open the front
- You can alternatively grab inside the USB port and pull the cover off



### Step 3 — Removing the bottom panel



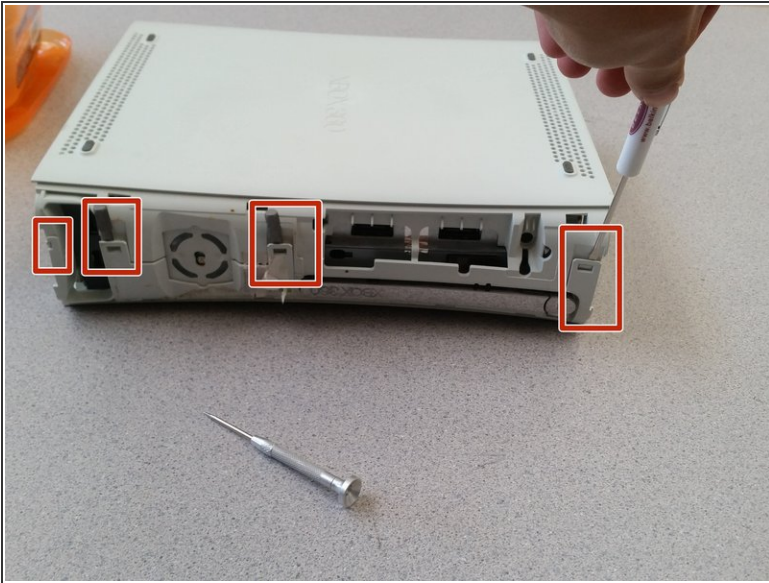
- Use a small tool to stick in and push these pins
- Be sure to keep pressure pulling outwards for this to come out easily
- Make sure that you pop out the pins on both sides

### Step 4 — Removing the top plate





- Same as the bottom plate you want to push in the buttons holding this in
- ⓘ Note that there are six buttons holding this together in total so it is ok to accidentally break 1 or 2

## Step 5 — The front case



- You have to evenly disconnect all four of these connectors holding it together

 I used flat head screw driver bits to hold the connectors open

 You have to remove a warranty sticker to open the console. Be warned, this will void your warranty.



## Step 6 — Removing the back of the casing



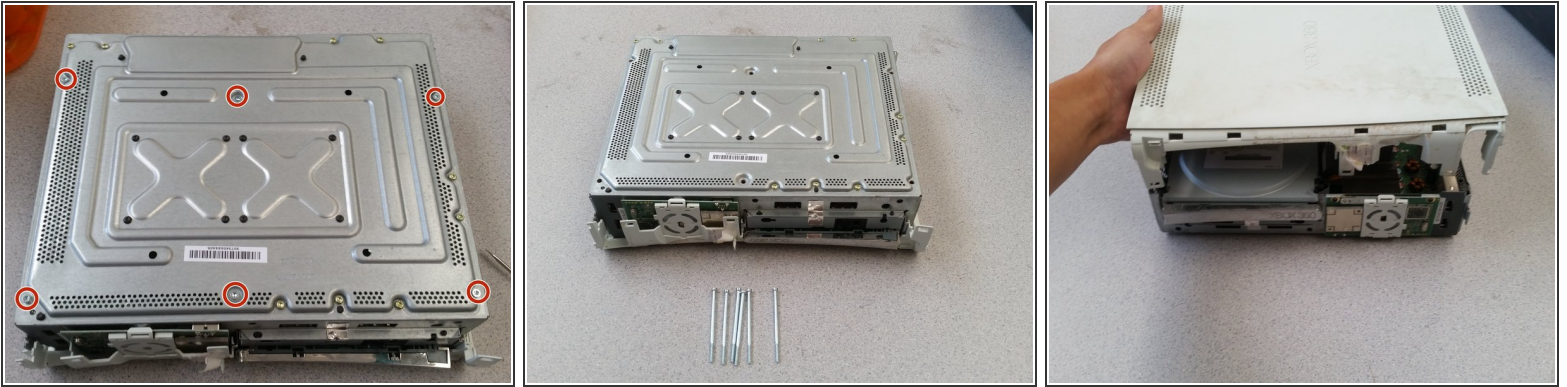
- You must push in these buttons (7 in total)
- ⓘ It is nearly impossible to not mess up the plastic using a screwdriver, i would recommend using an x-acto knife
- ⓘ This was one of the harder steps, you must push the button in until it clicks and then go farther still
  - Make sure you keep pressure applied outwards so that the locks do not re-engage

## Step 7 — Removing the disc drive button



- To pop off this button, use the flat end of a spudger or flat-head screwdriver.

## Step 8 — Opening up to the motherboard



- Remove the six **silver** screws
- Flip over the whole Xbox holding both the plastic and the metal, then pull off the casing

## Step 9 — Removing the disc drive



- Carefully remove the two connectors
- ⓘ The disc drive may have some tape in the front holding it in place, simply remove this.



## Step 10 — Opening up the fans



- To remove the fan covering, use a flat head screw driver as shown to gently pry it off

## Step 11 — Removing the fans



- Use a small flat head screw driver to open this locking mechanism and then gently remove the fan connector
- Use a screw driver or spludger to pry out the fan from the casing

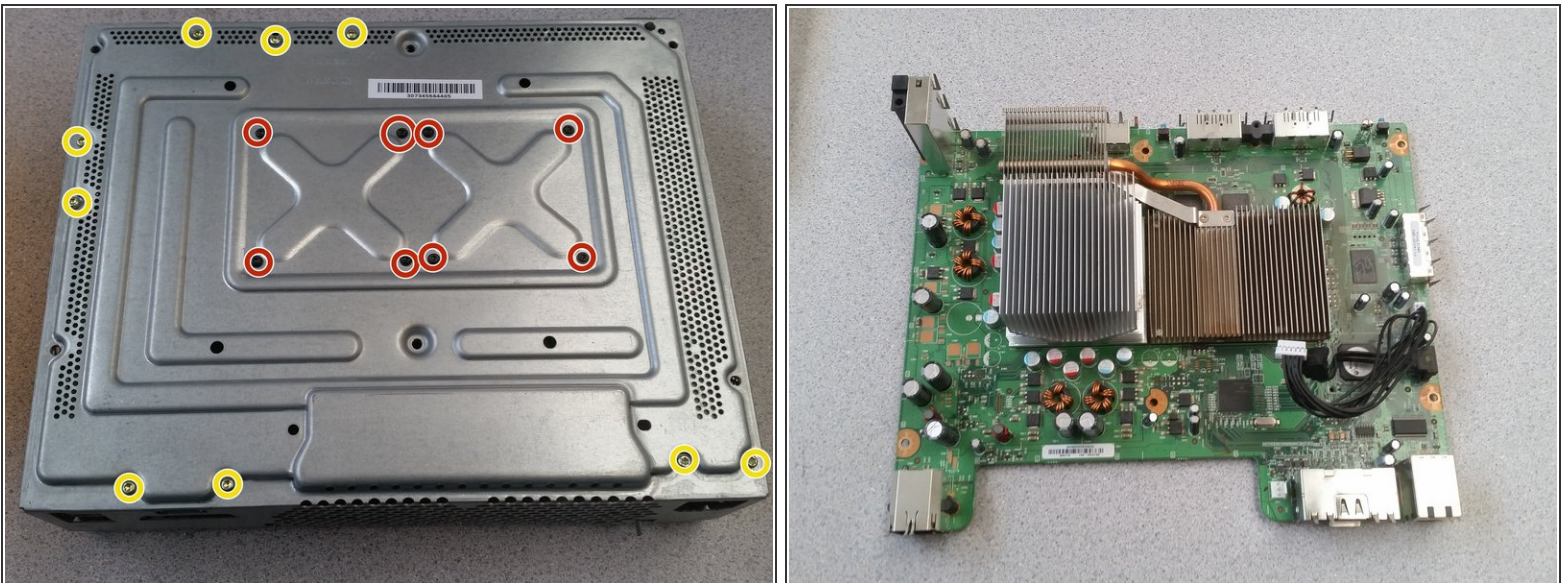


## Step 12 — Removing the power button



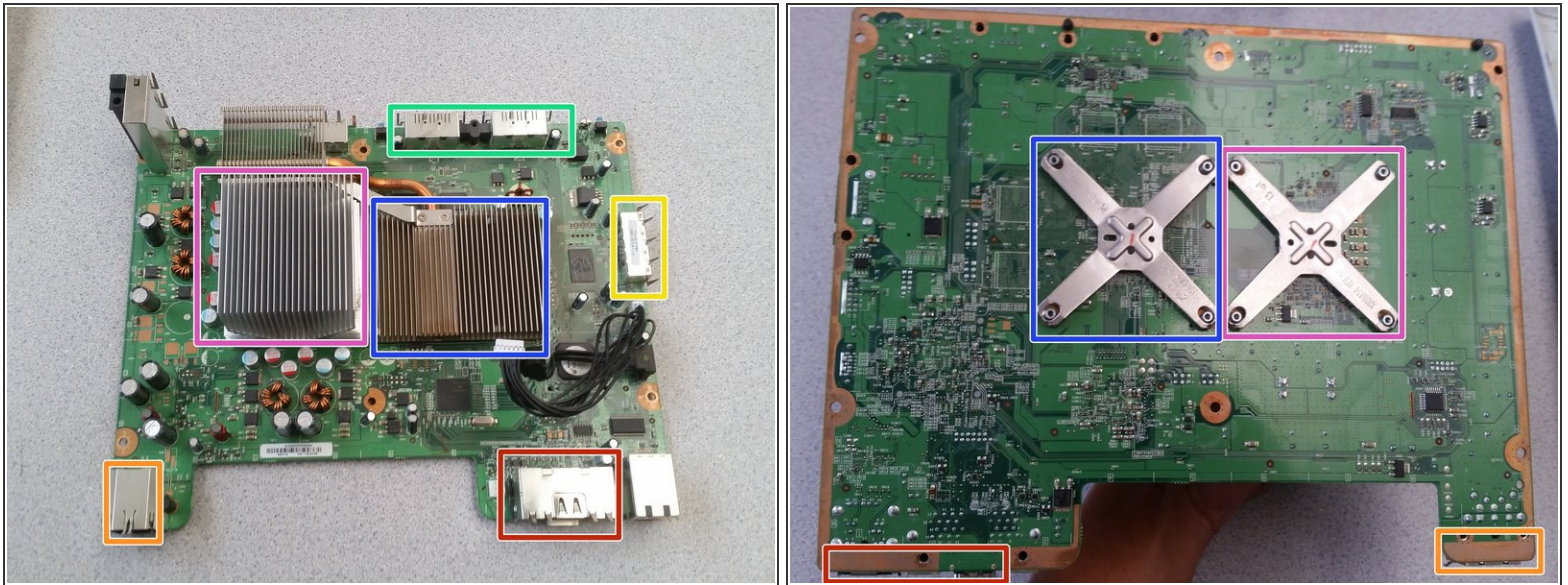
- To remove the "On" button simply disconnect the plastic clip
- Remove the three black screws and pull the chip directly outwards so you do not damage the connector

## Step 13 — Removing the mother board



- Remove the 9 gold screws
- Remove the 8 black screws
- Carefully pull out the mother board and make sure that you do not damage any connectors

## Step 14 — Displaying the main components.



- Memory card ports
- Custom ATi Graphics Processor with 10Mb of Ram
- 3 IBM PowerPC Cores Each Running At 3.2Ghz with 512Mb of System Ram
- Hard drive port
- Power port
- HDMI and Video ports



## Step 15 — You're finished!



- This is it. Follow these steps in reverse to re-assemble your Xbox 360 system!